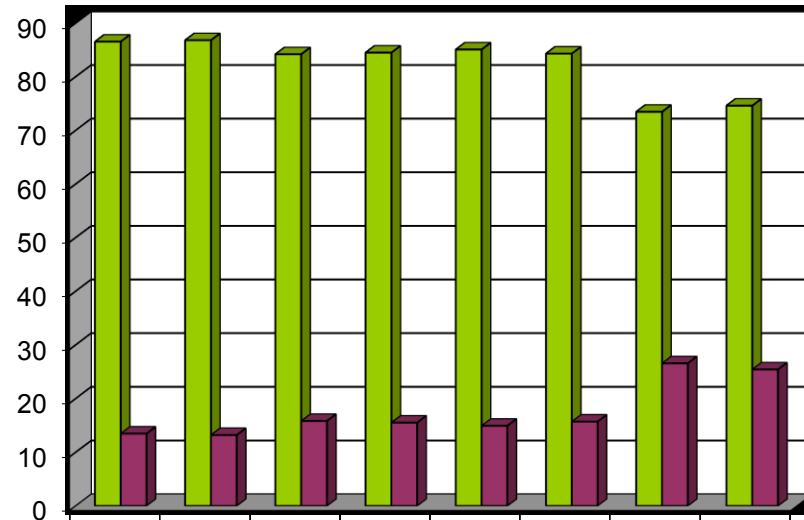


RIEPILOGO ANNO 2019



	CGA	I	II	III	IV	V	VI	VII
	401	1636	2023	2965	2525	3179	1823	2637
■ % PRESENZA	86,53	86,8	84,18	84,49	85,07	84,3	73,45	74,59
■ % ASSENZA	13,47	13,2	15,82	15,51	14,93	15,7	26,55	25,41